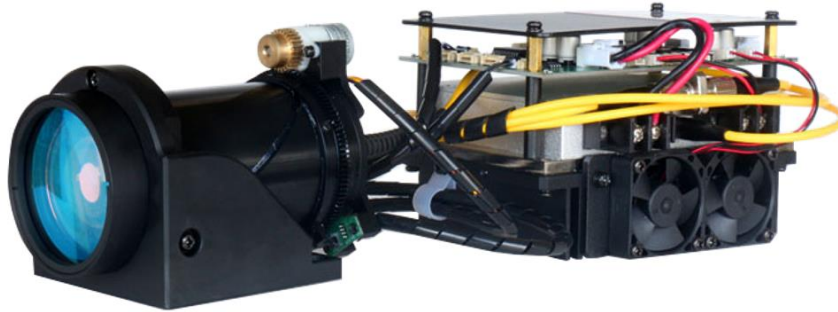


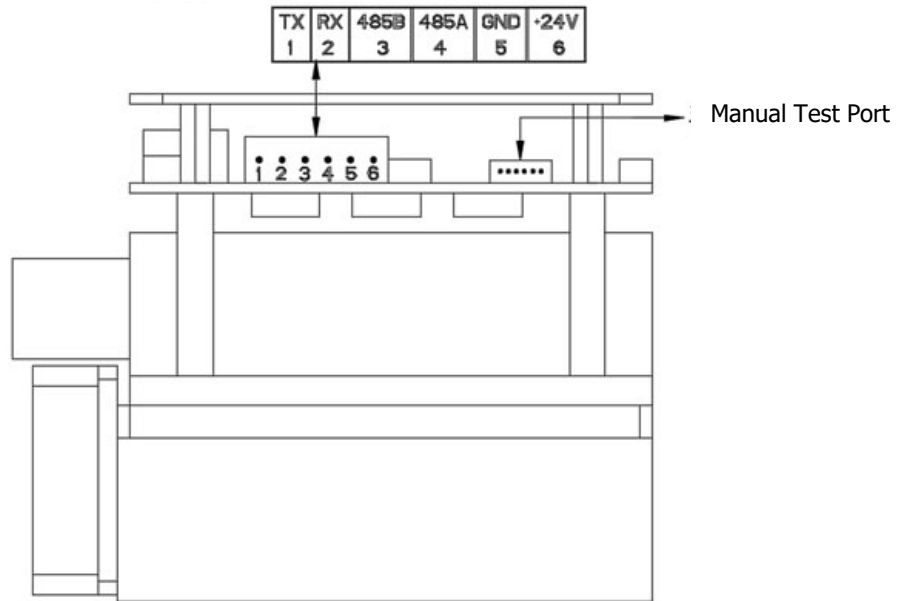
SG-IR808-3KL**- 3000m Long Distance 808nm Infrared Laser Illuminator Module****1. Features**

- > Intelligent auto-dimming, Smart match, Hot-swappable
- > -35°C low temperature cold starting
- > Fiber Coupling Edge Emitting Laser (EEL)
- > Synchronized zoom with Savgood visible camera
- > Clear picture and spot boundary

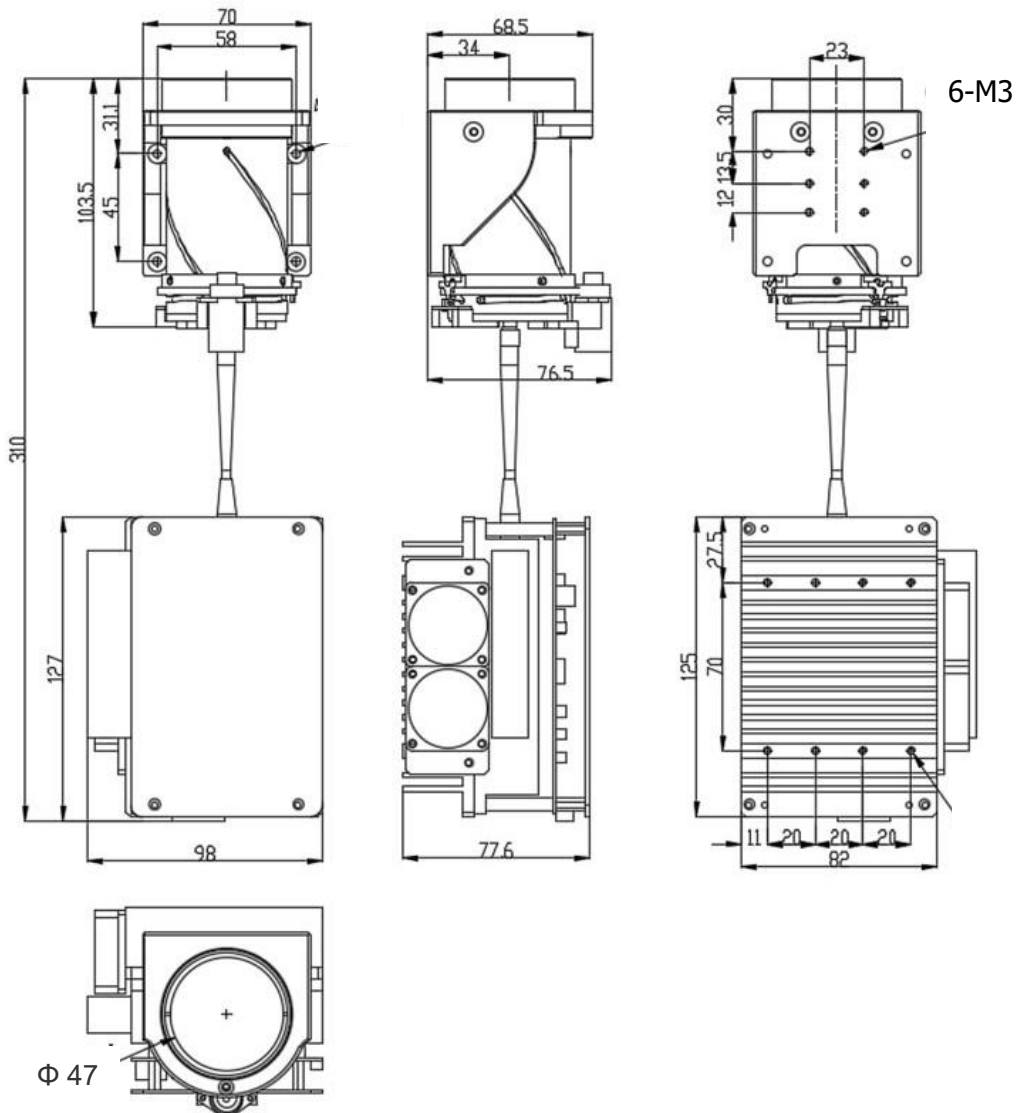
2. Specification

Model	SG-IR808-3KL
Effective Distance	≥3000m
Mode	Fiber Coupling EEL (Edge Emitting Laser)
Wavelength	808±3nm
Input Power	<75W
Output Light Power	≥20W
Laser Beam Angle	Far Angle 0.3°, Effective Distance>3000m, Beam Spot Diameter < φ16m Near Angle 35°, Effective Distance>10m
Initialization time	10s
Control Mode	UART_TTL, RS-485, Manual
Communication Interface	RS-485, TTL232, Manual Control
Communication Protocol	Pelco-D (9600bps)
Working Mode	Continues
Service Life	> 20000H
Input Power	DC24V±10%, 2.2A±0.3A
Operation Temperature	-35°C~+55°C
Storage Temperature	-40°C~+85°C
Dimension	310mm×98mm×78mm
Weight	1.7kg

3. Interface Definition



4. Dimension



Hangzhou Savgood Technology Co., Ltd.

Rm. 701, Xincheng Fazhan Building #1, No. 406 Xintiandi Street,
Xiacheng District, Hangzhou City, 310004, China
Tel: +86 - (571) 8803 8121
Email: sales@savgood.com
<http://www.savgood.com>
<http://www.savgoodtech.com>

*Design and specifications are subject to change without prior notification.
© 2013 Savgood Technology Co., Ltd.